



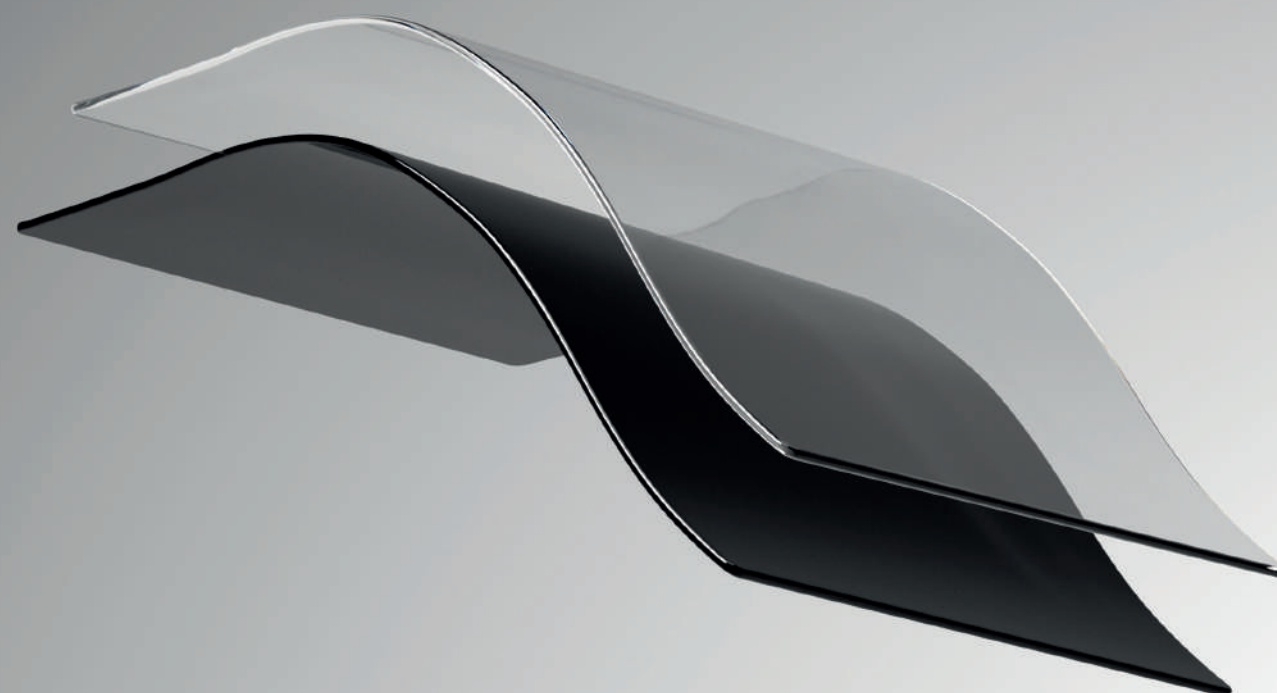
Achtseweg Zuid 153V
5651 GW Eindhoven - The Netherlands

elstar-dynamics.com
contact@elstar-dynamics.com



eclipse

Dynamic smart glass



by  ELSTAR

Eclipse is the world’s most advanced and sustainable dynamic smart glass, providing all the benefits of natural light, or blocking it in seconds at the flick of a switch, for privacy and cool comfort.

Eclipse reduces HVAC energy consumption by up to 30% (75% in some reports), lowering utility bills and CO₂ footprint.

Eclipse is based on electrophoretic ink technology - proven in more than 1 billion e-readers, enabling customizable closed state colours, and a completely colour-neutral open state.

At just 1 mm thick, and available in custom sizes up to 2.9 x 3.3 m, eclipse is also the lightest, largest, dynamic smart glass available, and with full compatibility with lamination and insulating glass unit processes, is also the most compatible.

Contact our applications team to discuss how Eclipse can improve the sustainability of your next glazing project.

Features



Reduces solar heat gain by 85%



Improves occupant productivity and well-being



Reduces HVAC energy consumption by up to 75%



Reduces CO₂ footprint



Fast switching between privacy and transparency



No colour cast



Low power consumption



Affordable



Thin, light and up to 2940 x 3370 mm



Fully compatible with glass channel



Wide range of applications



Leverages existing manufacturing



All harmless earth-abundant materials



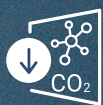
All low-energy processes



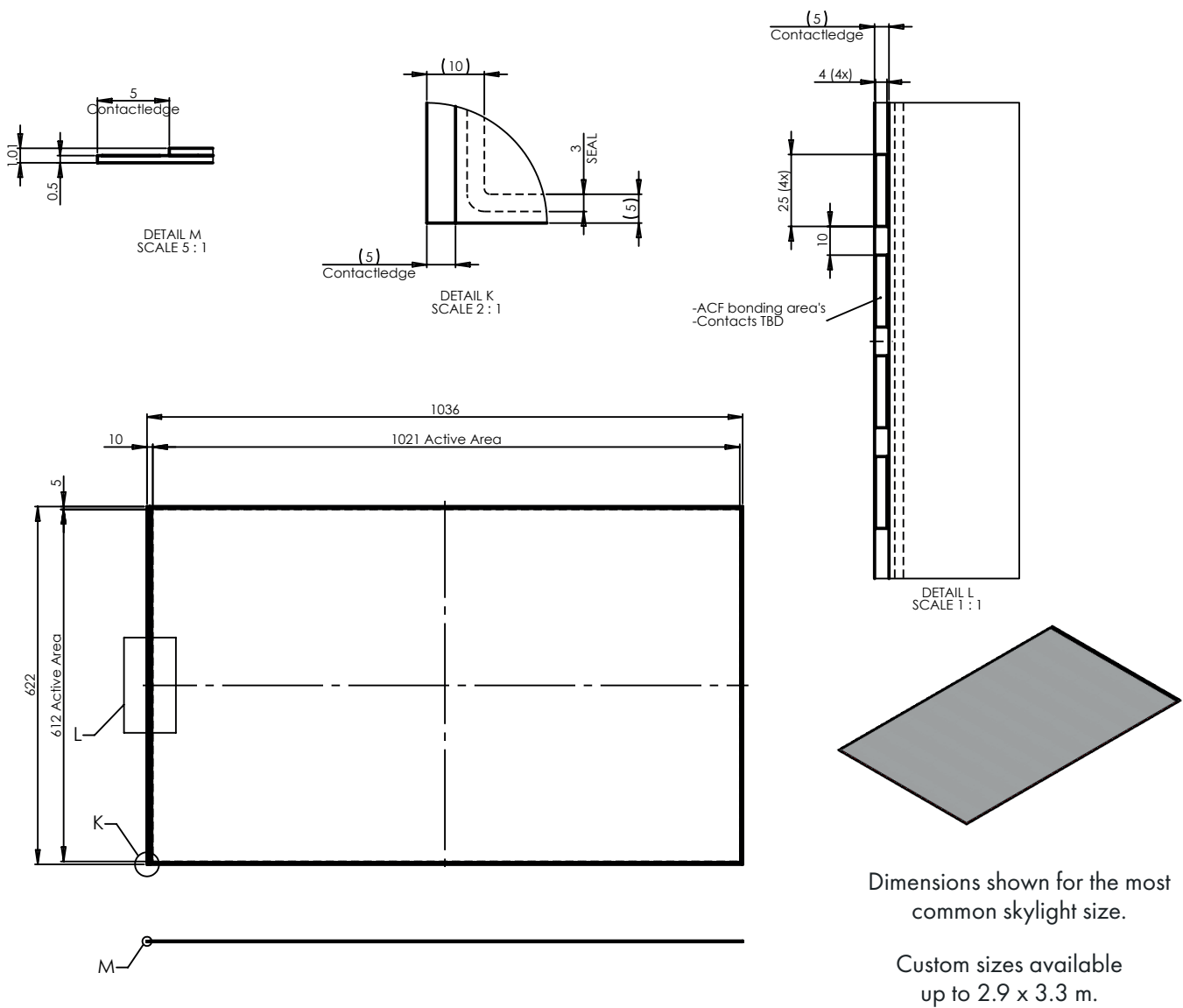
Zero toxic waste



99% recyclable



Low embedded carbon



Eclipse Specifications

- Dynamic range: 0.1% to >70% VLT
- Switching speed: ~30 s, regardless of size
- Intermediate levels: unlimited
- Color: neutral black, customizable
- Color rendering index: 98% (open)
- Haze: 3%
- Power consumption: 1W / m²
- Weight: 2.4 kg / m²
- Operational range: -20°C to +90°C

Insulating glass unit incorporating eLstar ELM

